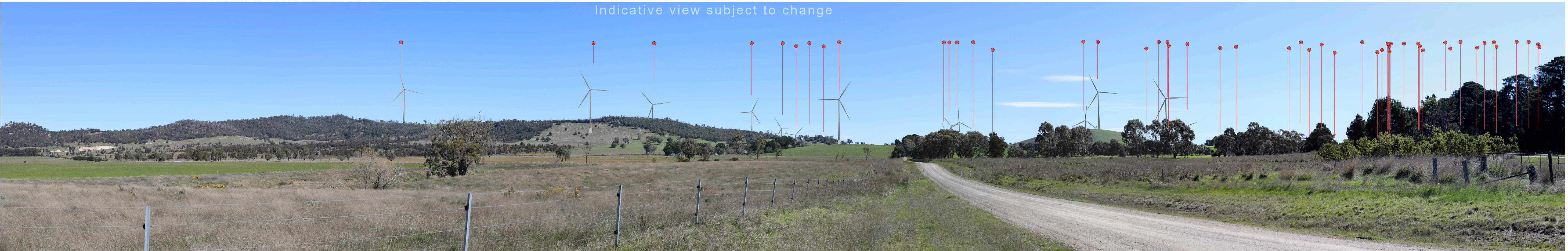




NWF-VP05 Existing view

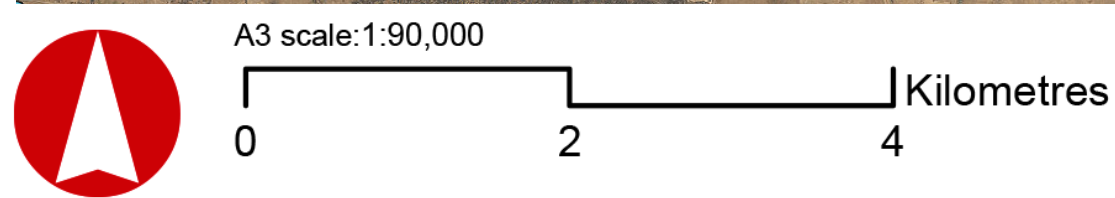


NWF-VP05 Indicative view



NWF-VP05 Indicative view with wind turbines highlighted in red

NWF-VP05 Location



- Legend**
- ⊗ Preliminary Turbine Locations
  - Dwelling Locations
  - Project Area
  - Road
  - Viewpoint location and viewing direction

Indicative view subject to change

Original Photo Rhiannon Saward | 50mm | DSLR Canon EOS 5D Mark IV | 2:26pm 12 September 2023 | N 143,43.2025E 143,43.2025E (NZTM)  
Reading distance for correct scale: 400mm | Viewpoint Elevation: 432.7m | Field of View Approximately 110° horizontal (across 1 x A1 pages) & 34° vertical

VIEWPOINT NWF-VP05	
LOCATION	GLENDARUEL CFA
COORDINATES	37,20.7301S , 143,43.2025E
ELEVATION	432.7m
VIEWING DIRECTION	EAST
DISTANCE TO CLOSEST TURBINE	2348 m
ZONING	FARMING
VIEWPOINT DESCRIPTION	REPRESENTATIVE OF RURAL RESIDENTIAL DWELLINGS

Nyaninyuk Wind farm

