



NWF-VP04 Existing view

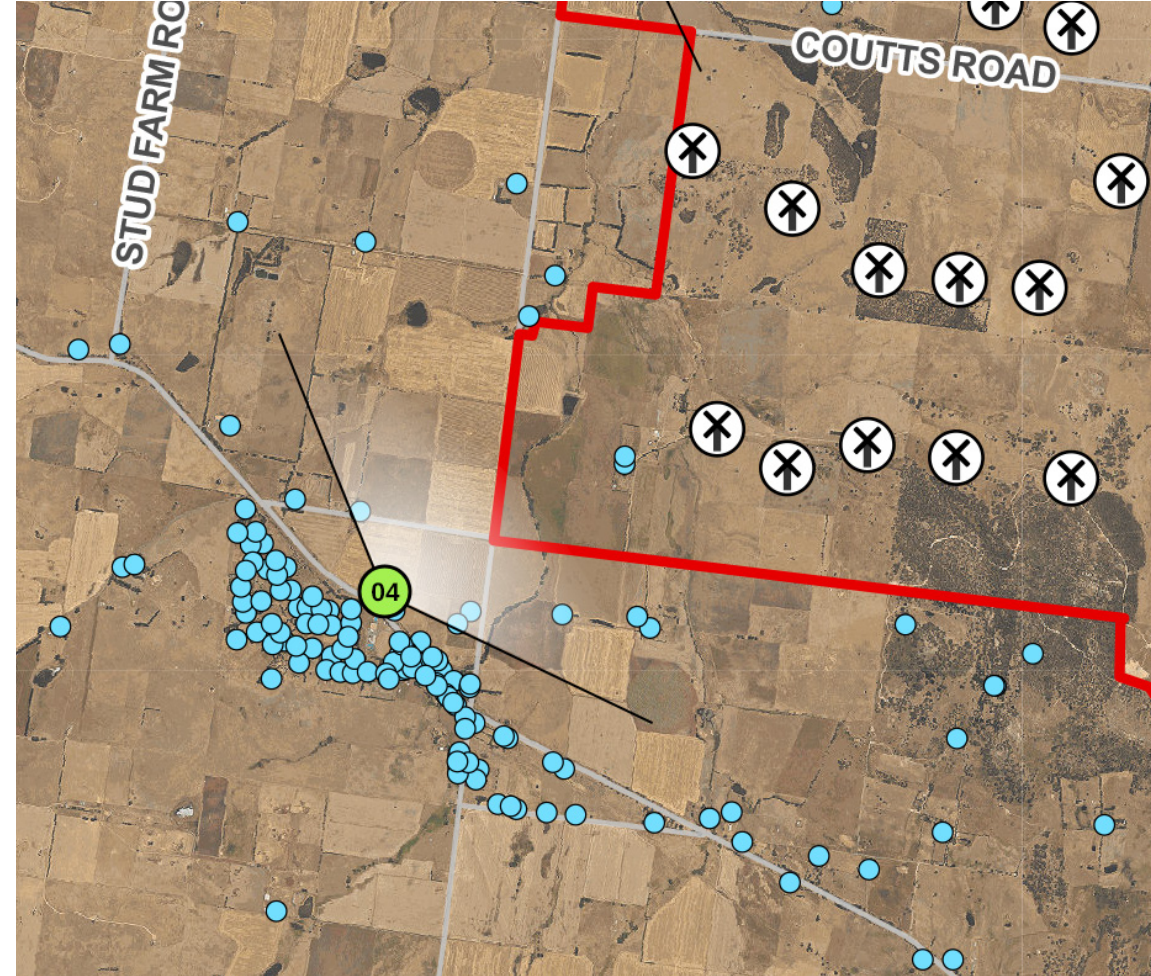


NWF-VP04 Indicative view

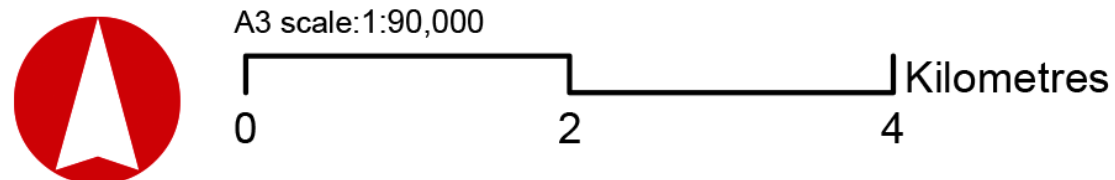


NWF-VP04 Indicative view with wind turbines highlighted in red

NWF-VP04 Location



- Legend**
- ⊗ Preliminary Turbine Locations
  - Dwelling Locations
  - ▭ Project Area
  - Road
  - Viewpoint location and viewing direction



Indicative view subject to change

Original Photo Rhiannon Saward | 50mm | DSLR Canon EOS 5D Mark IV | 5:41pm 12 September 2023 | N 37,21.3193S 143,38.1039E (NZTM)  
Reading distance for correct scale: 400mm | Viewpoint Elevation: 461.2m | Field of View Approximately 110° horizontal (across 1 x A1 pages) & 34° vertical

VIEWPOINT NWF-VP04	
LOCATION	WAUBRA RECREATION RESERVE
COORDINATES	37,21.3193S , 143,38.1039E
ELEVATION	461.2m
VIEWING DIRECTION	NORTH EAST
DISTANCE TO CLOSEST TURBINE	2345 m
ZONING	LOW DENSITY RESIDENTIAL
VIEWPOINT DESCRIPTION	REPRESENTATIVE OF RESIDENTIAL DWELLINGS AND PRIMARY SCHOOL WITHIN WAUBRA

**Nyaninyuk Wind farm**

