

# NYANINYUK WIND FARM

**Location:** Project site between Evansford, Clunes and Waubra (Western Victoria)

**Capacity:** Up to 330 MW

**Turbines:** Up to 58 turbines (hub height from 150m-180m, tip height up to 271.5m)\*

**Investment:** \$700 million\*

**Jobs:** Up to 200 jobs during construction, up to 10 ongoing full-time roles\*

\*Indicative figures subject to change following consultation, design refinement and additional studies.



## LEADERS IN RENEWABLE ENERGY:



ACCIONA Energía is the largest 100% renewable energy company in the world, built on the principle of 'Community First' projects. Our sites deliver clean and sustainable energy generation while creating jobs and positive impacts throughout the local community.

With over 20 years' experience in Australia our 'build, own and operate' model sets us apart as a developer that works closely with landowners, neighbours and the community to deliver integrated solutions to the energy crisis.

Locally, we have operated the Waubra Wind Farm since 2009, which has delivered over \$1.4 million in community benefits, through a community fund, sponsorship and scholarship programs.

With a long history of delivering successful projects around the country and dedicated community teams working in the area we strive every day to live up to our mantra of 'Powering the Community for Good'.

## CONNECTION TO COUNTRY:

ACCIONA Energía acknowledges the Traditional Custodians of the land our proposed project lies on, the Dja Dja Wurrung People, and recognises their continuing connection to the land and waterways. We pay our respects to their Elders past, present and emerging and extend this to all Aboriginal and Torres Strait Islander People.

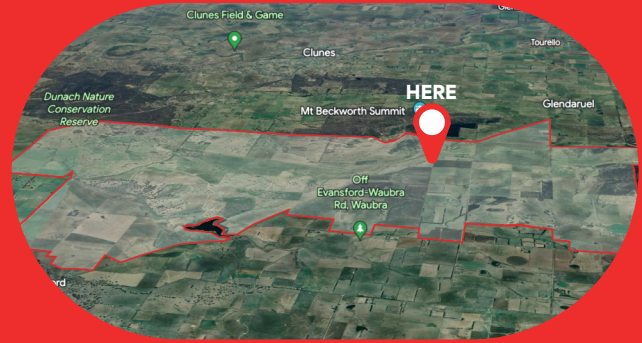
Nyaninyuk is the traditional name for nearby Mount Beckworth in the Dja Dja Wurrung language. [Na-ni-nook] To say the "ny" sound in Nyaninyuk, don't pronounce the "y". Instead, make an 'n' sound by placing the middle of your tongue on the roof of your mouth.



# LOCATION OVERVIEW:

Nyaninyuk Wind Farm is a proposed renewable energy project in Western Victoria. The site is located between Evansford, Clunes and Waubra. The project is at the intersection of Hepburn Shire, Pyrenees Shire and Ballarat City Council.

The project has the potential to generate enough energy to power more than 210,000 homes annually. The site was chosen due to its wind resource, compatibility with the existing environment and good road access from the Sunraysia Highway.



## ANTICIPATED TIMELINE:



The project is currently in its early planning stage. During this period we are undertaking preliminary studies and monitoring the wind resource to understand any constraints it may have. This process gives us an indication of the potential project boundaries and then further down the track a clearer idea of the turbine layout.

From the earliest stages in the project, we have sought community and stakeholder feedback. We will continue to do so throughout the planning process, to address any concerns and work closely together for the best project outcomes.

## COMMUNITY BENEFITS:



### **JOBS AND TRAINING:**

Renewables offer a secure, well-paid career in a vibrant sector. The project will create hundreds of construction jobs as well as offering pathways to gain experience working on a major project. In the operations phase, we'll need a team of staff to maintain and operate the project over its multi-decade lifespan.



### **PROCUREMENT AND SUPPLIER OPPORTUNITIES:**

ACCIONA Energía's projects commit to sourcing as much work and supply as possible from local businesses ensuring the growth and development opportunities benefit local communities first. From earthworks to catering, we want to work with local people to supply our projects.



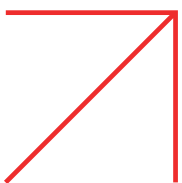
### **NEIGHBOUR BENEFITS:**

We engage closely with those nearest to our potential sites, and can offer assistance in a range of forms, including financial benefits and landscaping.



### **DEDICATED COMMUNITY BENEFITS FUND:**

We will establish a community benefits program which will assist community organisations, community groups and local schools with financial grants to support community events, projects and activities.



## CONTACT US:

ACCIONA Energía is committed to engaging with the local community surrounding the Nyaninyuk Wind Farm. We acknowledge the value of your feedback and questions. You can contact us via our free call community hotline, email or by post.

**Post:** PO Box 24110, Melbourne VIC 3001.

**Community information hotline:** 1800 283 550

**Email:** [nyaninyuk@accionna.com](mailto:nyaninyuk@accionna.com)

**Community Hub:** [community.accionna.com.au/nyaninyuk](https://community.accionna.com.au/nyaninyuk)

**Website:** [www.accionna.com.au/nyaninyuk](https://www.accionna.com.au/nyaninyuk)



Visit our Community Hub!